



Upcoming Monitoring/Insect Activity

Contact:

Marion Murray
435-797-0776
marionm@ext.usu.edu
www.utahpests.usu.edu/ipm

[click here](#) for archived advisories

Peach Twig Borer	Third generation egg hatch ends at 2940 DD (after biofix)
Codling Moth	3rd Generation egg hatch ends at 3210 DD (after biofix–estimate)
Greater Peachtree Borer	Moth flight and egg-laying continues until mid-September

Degree Day Accumulations, as of Friday, September 7

County	Location	Codling Moth, Peach Twig Borer (Base 50°F)				
		DD since March 1	CM DD since biofix*	% CM Egg Hatch	PTB DD since biofix*	% PTB Egg Hatch
Box Elder	Perry	3065	2883	75	2717	89
Cache	North Logan	2427	2289	8	2129	4
	Richmond	2712	2457	25	2308	22
	River Heights	2742	2559	31	2405	40
Carbon	Price	3046	2776	65	----	----
Davis	Kaysville	3070	2867	73	2685	86
Juab	Tintic	2576	----	----	----	----
Salt Lake	SLCC	3455	3190	97	2991	2 (4th)
	West Valley City	3306	3053	89	2855	97
Tooele	Erda	3530	3126	92	----	----
	Grantsville	3601	3197	97	----	----
	Tooele	3527	3142	93	----	----
Utah	Alpine	2779	2576	33	2413	42
	Genola	3023	2782	68	2602	76
	Lincoln Point	2852	2640	45	2466	53
	Orem	3063	2846	72	2604	76
	Payson	3009	2804	70	2651	83
	Provo	3012	2666	51	2540	67
	Santaquin	2923	2743	58	2583	73
	West Mountain	2965	2443	27	2300	22
Weber	Pleasant View	3190	3022	85	2838	97

“Base 41F” and “base 50F” refer to the lower temperature threshold at which insects develop;

***Biofix** is the date of moth flight. (CM=Codling Moth, PTB=Peach Twig Borer)

Insect Activity

APPLES and PEARS

Codling Moth

Continue protecting fruit in Box Elder, Weber, Salt Lake, Davis, and most of Utah Counties until Sept. 15.

As you are harvesting your apples, see the next page for a few images of apple damage.

PEACH, NECTARINE, APRICOT

Boxelder Bugs

If you feel you have a problem with this pest, you can use Prentox Pyronyl Crop Spray (pyrethrin), which can be used up to the day of harvest, or Sevin, which can be used up to 3 days before harvest.

Greater Peachtree Borer

Moth flight of this insect has dropped dramatically, so if you have put a spray on the trunks of your trees in the last week, you should be all set for the season.

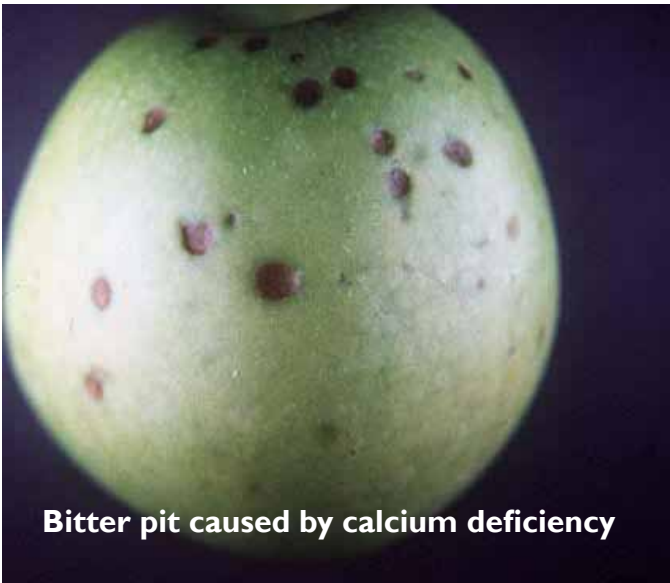
Peach Twig Borer

All locations are seeing third generation egg hatch now, while one (Salt Lake City) has started a fourth! As with the apples, keep the peaches protected until Sept. 15. (Orchards with good control in the first two generations may not need late season control.)

Spinosad can be used up to 3 days before harvest time.

Apple Fruit Damage

As you are harvesting your apples, you may notice a few “blemishes” that you don’t recognize. The next few pages show a sampling of what they may be:



Bitter pit caused by calcium deficiency



Fruit russeting of unknown origin



Frost damage



Hail damage



Sunburn



Sunburn



Powdery mildew



Rosy apple aphid damage



Campylopus bug feeding



Cat-facing injury



Codling moth deep entry

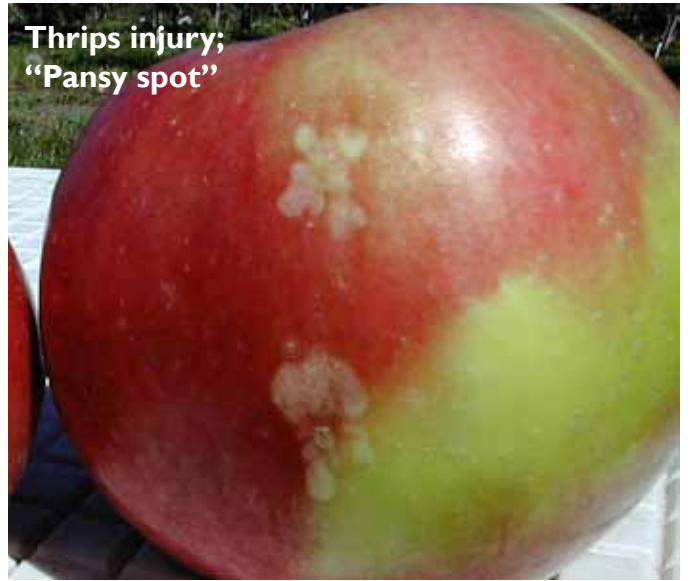


Codling moth entry followed by rot

San Jose scale



**Thrips injury;
"Pansy spot"**



Green fruitworm feeding



Leafroller feeding



Fruitworm feeding injury and rot

